

# KANO CONNECT

## INCREASING ACCOUNTABILITY IN KANO STATE'S ROUTINE IMMUNIZATION PROGRAMS

Kano Connect is a mHealth platform managed by the Kano State Primary Health Care Management Board (KSPHCMB) with support from eHealth Africa (eHA) for the effective management and supervision of health services delivery by health workers in Kano state. eHA launched and managed the platform in 2014 and successfully transitioned the platform to the state in 2017.

**Development:** eHA builds Kano Connect Platform with design input from Kano state

**Registration:** All KSPHCMB health workers added to the platform.

**Onboarding:** Health workers trained to use android devices and ODK forms

**Pilot Study:** Routine Immunization Supportive Supervision e-checklist piloted in Nassarawa, LGA (Kano City metro area)

# 1



### The Launch

**Implementation:** Deployment of eRIS forms across all administrative levels of the KSPHCMB

**Version 1.0:** Kano Connect Dashboard launched with feedback from pilot study

**Scaling Up:** All 1200+ KSPHCMB Routine Immunization staff trained on the use of Kano Connect platform

# 2



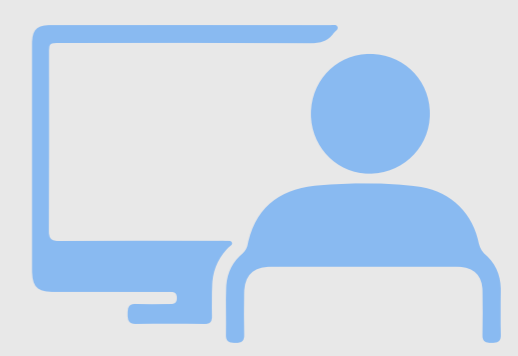
### Baseline Implementation

**The Final Version:** Kano Connect Dashboard

**Capacity Building:** 252 supervisory-level health workers and partners trained to use the Kano Connect dashboard

**Version 2.0:** Kano Connect Dashboard version 2.0 launched with additional features

# 3

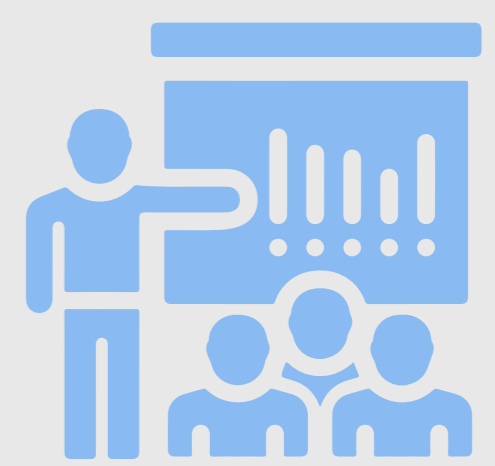


### Launch and Release of the Kano Connect Dashboard

**Framework Developed:** Kano Connect Charter transition terms and plans signed by KSPHCMB leadership

**Transition Team:** Kano Connect Operations Unit defined and trained in line with Charter and transition plan

# 4



### Transition

**Use:** KSPHCMB leading in the usage of Kano Connect!

**Support:** eHA continues to provide backend and technical support

# 5



### Post-Transition Support

